

# **Urban Agriculture and the Planning of City Regions**

Prof. Dr. Frank Lohrberg.

Institute of Landscape Architecture

RWTH Aachen University

Oct. 10., 2019

# Urban Agriculture and Innovation

My background and link to UA

UA definition and typology

UA can be innovative: stressing edge / urban opportunities

UA can innovate: green infrastructure / agriculture (?)

# My background and link to UA

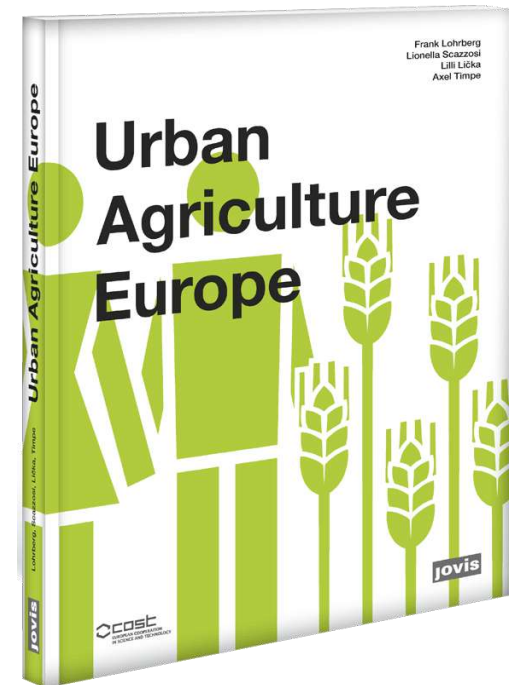
Phd,  
University of Stuttgart

lohrberg  
stadtdlandschaftsarchitektur,  
Stuttgart

Chair of Landscape  
Architecture,  
RWTH Aachen University



Landschaftspark Belvedere: Four lookouts  
out of steel mark the paths



LOHRBERG, F., LICKA, L., SCAZZOSI, L.,  
TIMPE, A., (Hg.) (2015): Urban Agriculture  
Europe. Berlin: Jovis



COST is supported by the EU Framework Programme Horizon 2020



COST-Action Urban Agriculture Europe





## COST-Action Urban Agriculture Europe

[Home](#) [Action](#) [Gallery](#) [Wiki](#) [Map-Tool](#) [Downloads](#) [Search](#) [Imprint](#)

You are here: [Home](#)

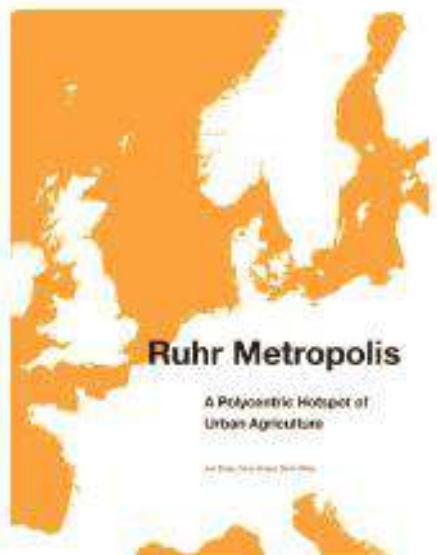
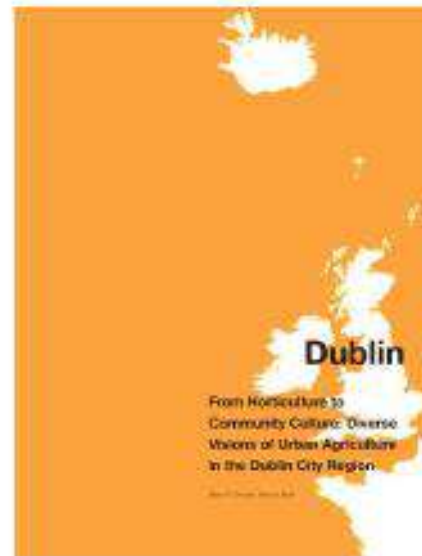
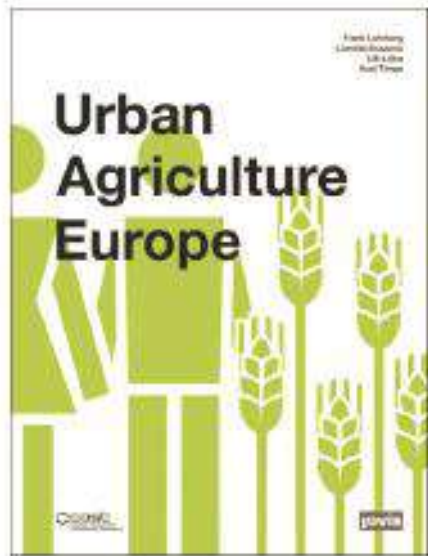
### COST Action Urban Agriculture Europe

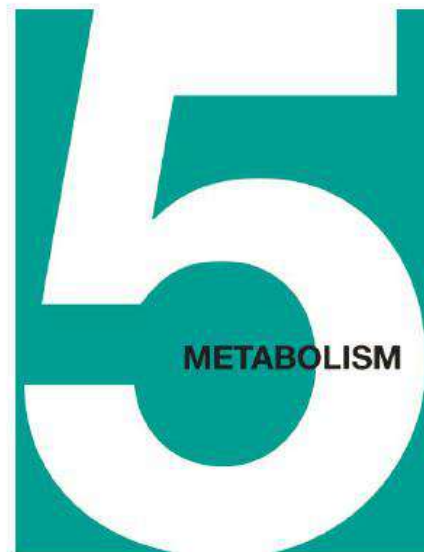
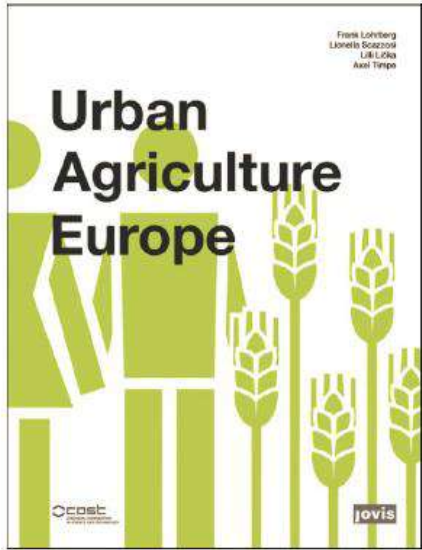
Urban Agriculture (UA) plays a key role in two global challenges: urbanization and food security. It can provide an important contribution to sustainable, resilient urban development and the creation and maintenance of multifunctional urban landscapes. In the globally emerging research field of UA, a European approach to the subject needs to be created. It has to integrate the unique European context regarding its urban and landscape pattern, the important role of the Common Agriculture Policy (CAP) and the needs of the European society. The COST-Action Urban Agriculture Europe (UAE) will initiate the definition of this European approach on the basis of existing research projects and reference regions in the partner countries.



The outcomes of the Action will help to focus future research on UA, modify the CAP and stimulate private and public activities in UA projects and planning. The Action will use an innovative approach crossing bottom-up and top-down methods, using the method of research by design and creating interfaces between the three methods. By working in close cooperation with regional stakeholders from the domains of urban development and agriculture the Action contributes to sustainable, resilient territorial development in Europe and aims for









# UA definition and typology

*Urban Agriculture spans all actors, communities, activities, places, and economies that focus on biological production in a spatial context, which—according to local standards—is categorized as “urban”.*

*Urban Agriculture takes place in intra- and periurban areas.*

*One of its key characteristics is that it is more deeply integrated in the urban system compared to other forms of agriculture. Urban Agriculture is structurally embedded in the urban fabric; it is integrated into the social and cultural life, the economics, and the metabolism of the city.*



*Urban Agriculture takes place in intra- and periurban areas.*



Abb. 43: COST Action Urban Agriculture Europe, Frank Lohrberg, Lehrstuhl Landschaftsarchitektur, RWTH Aachen



Abb. 42: COST Action Urban Agriculture Europe, Frank Lohrberg, Lehrstuhl Landschaftsarchitektur, RWTH Aachen

## Gardening Level

### Urban Food Gardening

#### Individual Production



Allotment Gardens



Family Gardens



Squatter Gardens

#### Collective Production



Educational Gardens



Community Gardens



Therapeutical Gardens



Allotment Gardens

## Farming Level

### Urban Farming

#### On-site Experience



Leisure Farms



Social Farms



Educational Farms



Therapeutical Farms

#### Flows



Local Food+ Farms



Cultural Heritage Farms



Experimental Farms



Environmental Farms





*One of its key characteristics is that it is more deeply integrated in the urban system compared to other forms of agriculture. Urban Agriculture is structurally embedded in the urban fabric; it is integrated into the social and cultural life, the economics, and the metabolism of the city.*





# UA can be innovative

Urban Agriculture is a breeding place for new forms of agriculture because of the “stressing edge”



Diversification and specification of production because of limited land resources



# UA can be innovative

Urban Agriculture is a breeding place for new forms of agriculture because of the “stressing edge”



Diversification and specification of production because of limited land resources



# Urban Agriculture is a breeding place for new forms of agriculture because of “urban opportunities”



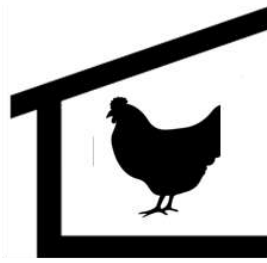
Diversification and specification of production because of urban opportunities





Newcomers in agriculture

wood cutting /  
roadside maintenance



chicken  
manure

crops

heat

electricity / heat

organic waste

biogas plant / compost

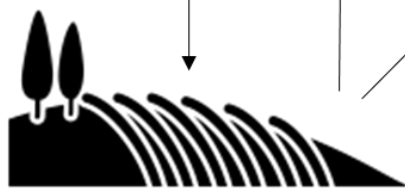
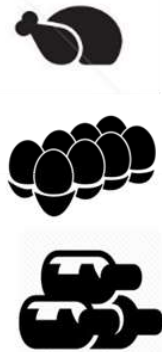
fertilizer

direct sale / farm  
shop

vinyards / crop  
fields



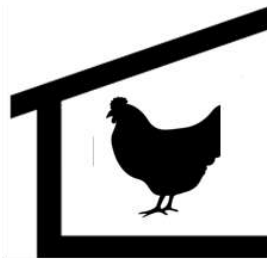
urban households



## Urban Agriculture as part of the cities metabolism



wood cutting /  
roadside maintenance



chicken  
manure

crops

heat

electricity / heat

organic waste

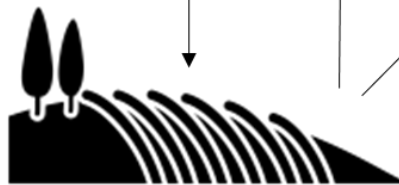
biogas plant / compost

fertilizer

direct sale / farm  
shop



urban households



vineyards / crop  
fields

**ecological and economic innovation**

Urban Agriculture as part of the cities metabolism

# Urban Farming Evolution

## Tradition



Rich tradition (at least some decades) in urban farming more or less all over the country, consolidated phenomenon, diverse focus



Notable tradition, but not covering most urban areas or less manifested than 1



No tradition or tradition has been cut since decades



No data (because not part of COST or no sufficient data collected)

## Innovation

✳ Aspect of innovation

Source: Generalisation from COST Action Urban Agriculture Europe case studies and reports. (See figure XX)



# EFUA – EUROPEAN FORUM ON URBAN AGRICULTURE

Commissioner      European Commission, Horizon 2020-Program  
Coordination and Support Action

Coordination      Chair of Landscape Architecture, RWTH Aachen University

Volume            2.040.000,00 €

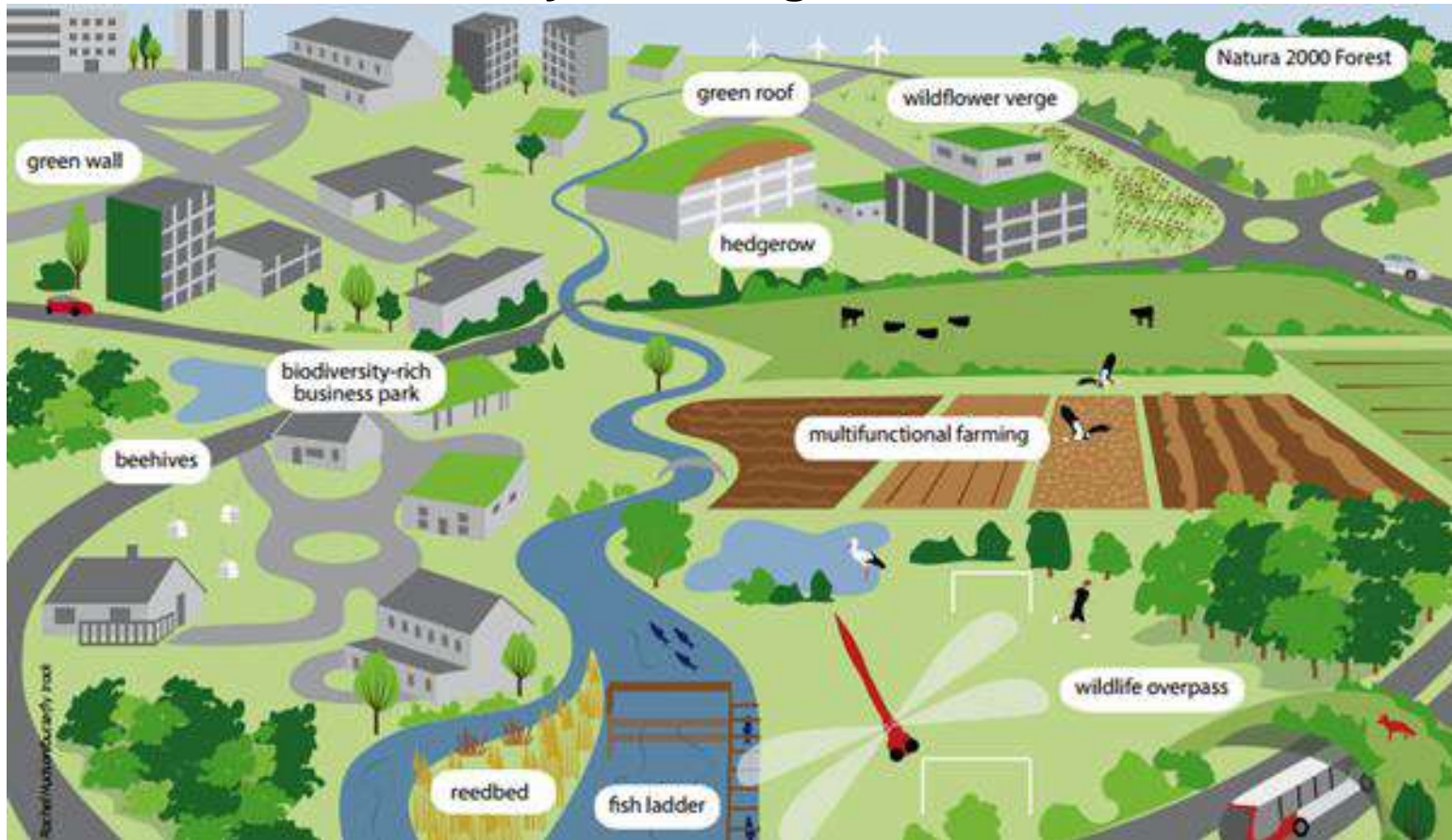
Duration           11/2020 - 10/2024

Partners            7 European Universities,  
City of Rome  
RUAF Global Partnership  
MAMMUT film



# UA can innovate city planning

## Green Infrastructure by Urban Agriculture



<http://biodiversity.europa.eu/topics/green-infrastructure/clipboard02.bmp>



# Community Co-Production Parc des Lilas bei Paris: Classical Park...



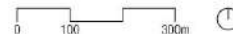
Foto: Axel Timpe



# Park and Co-production Parc des Lilas, Paris



Parc des Lilas



[Produktive Parks entwerfen : Geschichte und aktuelle Praxis biologischer Produktion in europäischen Parks](#), 1 Online-Ressource (611 Seiten) : Illustrationen, Diagramme, Karten, 2017

Plan: Axel Timpe  
Luftbildgrundlage: IGN-F



# Co-Production Parc des Lilas, Paris: ...agriculture embedded in the park ...





# Co-Production Parc des Lilas, Paris: ...agriculture as park ...





# Co-Production Parc des Lilas, Paris: ...allotment gardens...

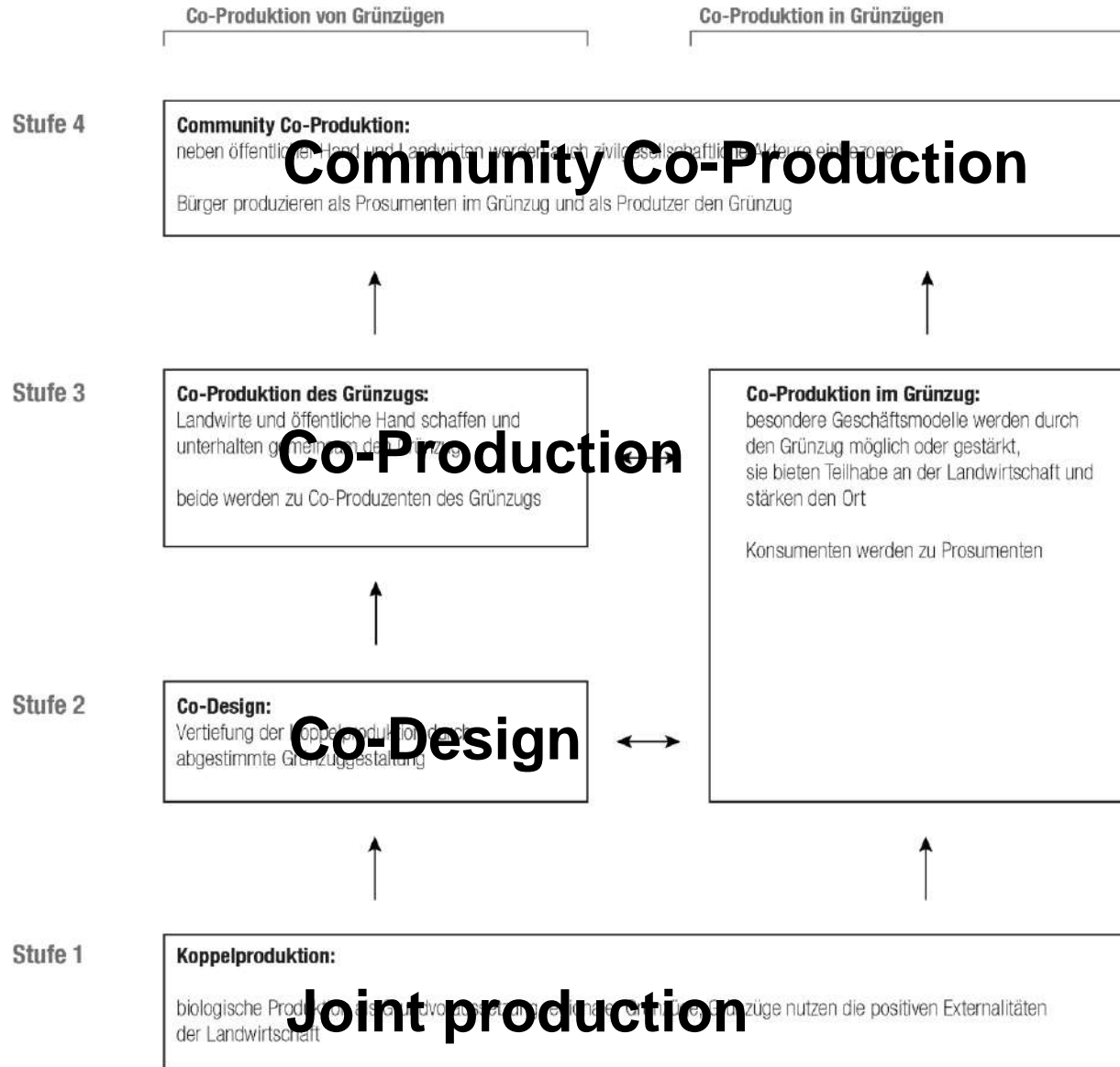




# Co-Production Parc des Lilas, Paris: ...new forms of urban food gardening...



# The ladder of co-production



Timpe, Axel:  
 Produktive Parks  
 entwerfen :  
 Geschichte und  
 aktuelle Praxis  
 biologischer  
 Produktion in  
 europäischen  
 Parks.  
 Dissertation,  
 Rheinisch-  
 Westfälische  
 Technische  
 Hochschule  
 Aachen, 2017,  
 Veröffentlicht auf  
 dem Publikations-  
 server der RWTH  
 Aachen University





Belvedere Park as missing link











Agricultural Park Belvedere  
1st Prize, 2007





Historic farmstead enriched by a botanic garden showing traditional crop plants





A path designed for both, urban dwellers and agricultural vehicles now surrounds the area.





Four lookouts out of steel mark the paths.





Four lookouts out of steel mark the paths.





They allow the visitors to observe the scenery – harvester and highway, dogs and doves, skater and sugar beets – from various angles





And put agriculture itself .on stage.



spatial innovation

And put agriculture itself .on stage.





Co-produced greenways as sustainable infrastructure of municipalities

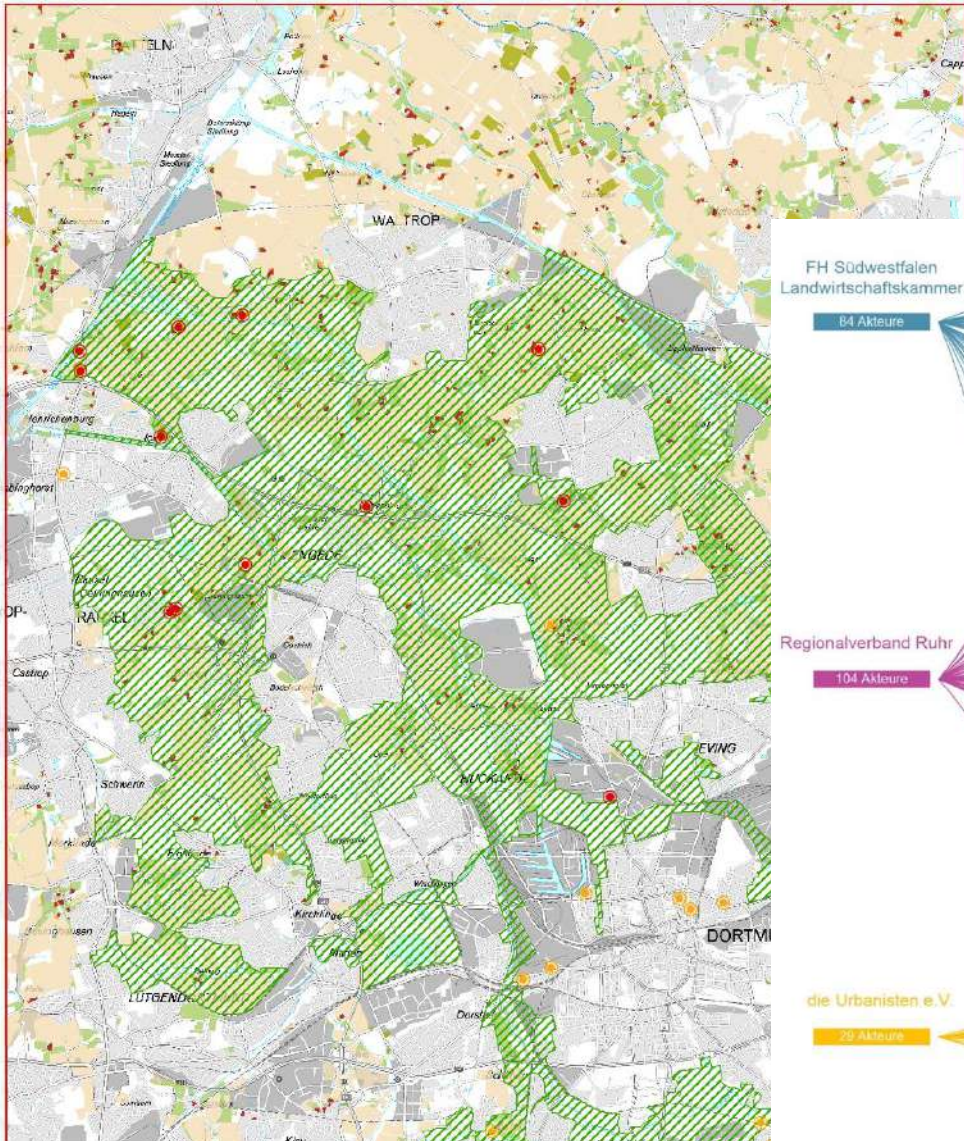
Commissioner: Federal Ministry of Education and Research

Coordination Institute of Landscape Architecture, RWTH Aachen University

Volume 800.000,00 €

Duration 06/2016 - 05/2019

Partners Regional Planning Association Ruhr  
Die Urbanisten, Dortmund  
University of Applied Science Südwestfalen, Department Agriculture



FH Südwestfalen  
Landwirtschaftskammer

84 Akteure

Regionalverband Ruhr

104 Akteure

die Urbanisten e.V.

29 Akteure

Ideenaufruf

7 Akteure

Zufallsfunktion

18 Akteure

Abgrenzung: © Linz/F © Regionalverband Ruhr, Essen



# Feasibility Studies in cooperation with farmers and civil society



## CoProGrün Machbarkeitsstudie Route der Agrarkultur für bessere Stadt-Land-Beziehungen

Am Beispiel des Grünzugs F. „Ökologischer Erntehelfer“ im Emmerer Landschaftspark  
Elisabeth Lutz - Regionalverband Ruhr



## CoProGrün Machbarkeitsstudie Regionale Lebensmittel Online Vermarkten

Am Beispiel der BioSchwämmen Dortmund im Grünzug F. des Emmerer  
Landschaftsparks  
Mira Rehrig - Fachhochschule Südwestfalen



## CoProGrün Machbarkeitsstudie Landschaftspflege durch Beweidung und Aufbau eines Mietgartens

Am Beispiel des Betriebs Dieckhoff im Grünzug F. im Emmerer Landschaftspark  
Benedikt Pöhlitz - Fachhochschule Südwestfalen/Landschaftsverband NRW



## CoProGrün Machbarkeitsstudie Konzept eines Hofcafés mit Hofläden und Verkaufsautomaten

Am Beispiel eines Hofes im Grünzug F. des Emmerer Landschaftsparks  
Mira Rehrig - Fachhochschule Südwestfalen  
Katharina Christen, Luisa Rosales - RWTH Aachen University



## CoProGrün Machbarkeitsstudie Reaktivierung des Gemeinschaftsgartens in Deininghausen

Modellprojekt im Grünzug F. „Ökologischer Erntehelfer“ im Emmerer Landschaftspark  
Carola Tobiasch, David Kory - Die Urbanisten e.V.



## CoProGrün Machbarkeitsstudie Bienenweiden durch bürgerliches Engagement

Am Beispiel des Grünzugs F. „Ökologischer Erntehelfer“ im Emmerer Landschaftspark  
Ulrich Häberle - Regionalverband Ruhr



## CoProGrün Machbarkeitsstudie Initiierung eines Gemeinschaftsgartens im Sozialen Zentrum Dortmund

Im Grünzug F. „Ökologischer Erntehelfer“ des Emmerer Landschaftsparks  
Carola Tobiasch, David Kory - Die Urbanisten e.V.



## CoProGrün Machbarkeitsstudie Wahrnehmung und Nutzung von Streuobstwiesen steigern

Am Beispiel des Grünzugs F. „Ökologischer Erntehelfer“ im Emmerer Landschaftspark  
Ulrich Häberle, Dennis Kemper - Regionalverband Ruhr



## CoProGrün Machbarkeitsstudie Aufbau eines Gemeinschaftsgartens in der Viktoriaresiedlung Lünen

Anleitung von Abstammern in Wohnungsanlagen  
Carola Tobiasch, David Kory - Die Urbanisten e.V.

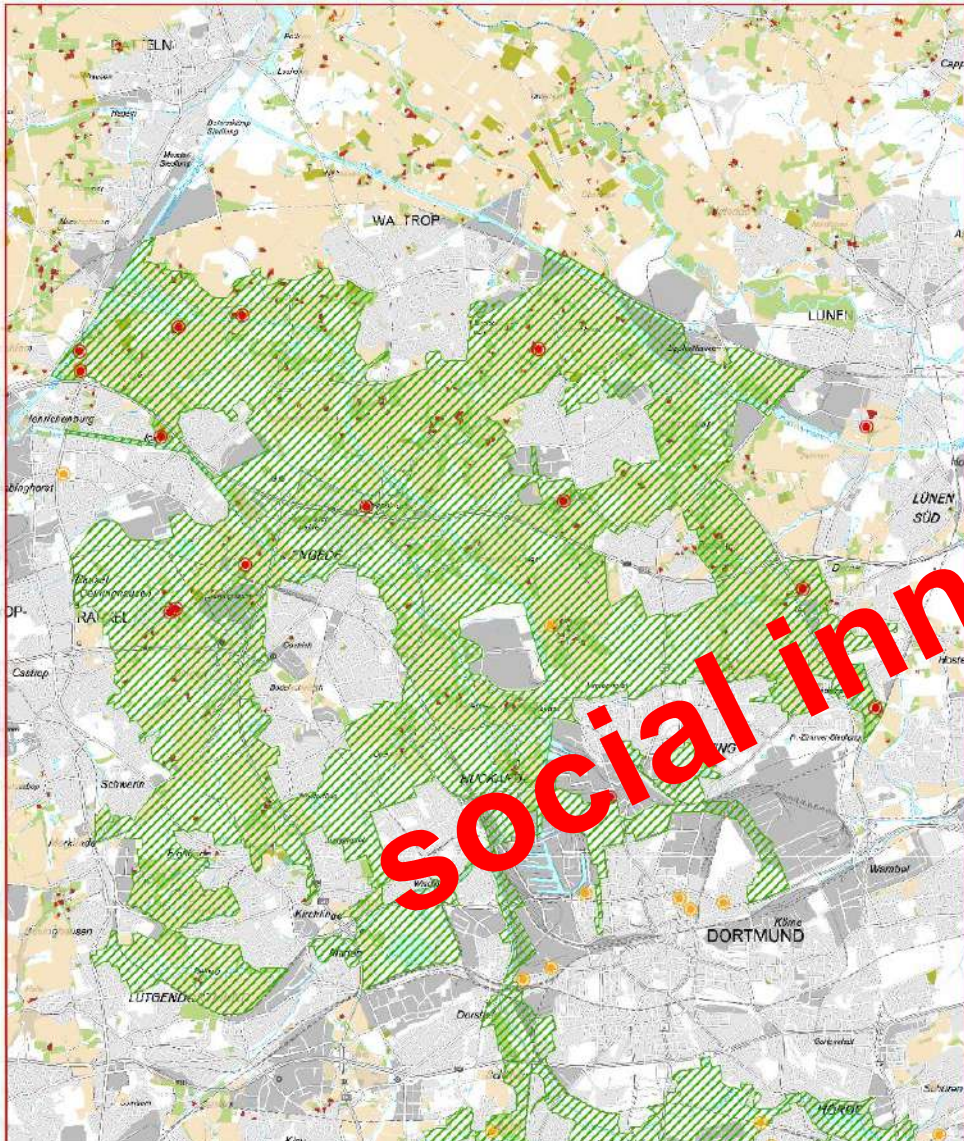


## CoProGrün Machbarkeitsstudie Von Pilz zu Pilz

Nachnutzung eines Bauschwamms im Grünzug F. für die Pilzzucht  
Mira Rehrig - Fachhochschule Südwestfalen







**social innovation**



Abb.: Luisa Ropelato – Master Thesis Arbeit, LA 2018